



WTCA TRUSS PLANT TOURS

Learn More About the Structural Building Components Industry

The objective of attending a plant tour is to familiarize fire and building industry professionals with the manufacturing processes for structural building components. Tours provide an in-depth look at a business that designs, manufactures, delivers, supplies, handles and provides technical support for these products and services.



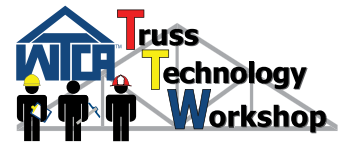
Attend a truss plant tour!



Why Attend a Truss Plant Tour?

- Participants gain a better understanding of the products that they see daily on construction sites, and how the design and manufacturing process affects the installed products.
- A knowledgeable industry representative leads the tour, providing valuable take-home information and answers to participants' questions at all stages of the tour.
- The tour emphasizes cold-formed steel components. In some cases, metal plate connected wood components, and engineered wood products (like I-joists, beams and headers) are also included.

Contact staff to schedule a tour and learn how you may also qualify for Continuing Education Units for Contractors, Architects, Engineers or Building Inspectors.



Call Trish Kutz (tkutz@qualtim.com) or Melanie Birkeland (mbirkeland@qualtim.com) at WTCA 608/274-4849.



WTCA – Representing the Structural Building Components Industry
6300 Enterprise Lane • Madison, WI 53719
608/274-4849 • 608/274-3329 (fax)
www.sbcindustry.com • wtca@sbcindustry.com

